



**Golden Crocodile Philodendron**  
*Philodendron 'Golden Crocodile'*

Height: 4 feet

Spread: 4 feet

Sunlight: ● ●

Hardiness Zone: 10

Other Names: Golden Serratum, Golden Ring of Fire Philodendron

**Description:**

A interesting variety that presents eye-catching golden yellow foliage that reaches upwards of 2ft. long, ; perfect for indoor growing in a bright area; create a big and bold statement in houseplant collections; low maintenance and easy to grow

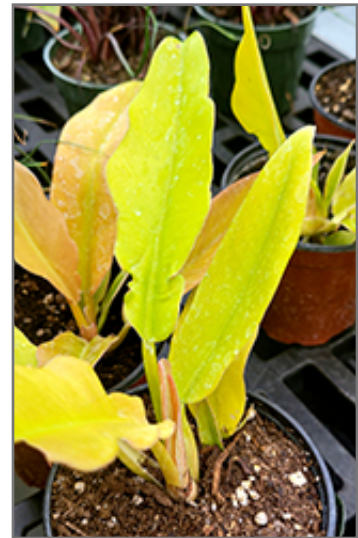
**Features & Attributes**

Golden Crocodile Philodendron's attractive pointy leaves emerge yellow, turning gold in color throughout the year on a plant with an upright spreading habit of growth.

This is a dense herbaceous evergreen houseplant with an upright spreading habit of growth. Its relatively coarse texture stands it apart from other indoor plants with finer foliage. This plant can be pruned at any time to keep it looking its best.

**Planting & Growing**

When grown indoors, Golden Crocodile Philodendron can be expected to grow to be about 4 feet tall at maturity, with a spread of 4 feet. It grows at a medium rate, and under ideal conditions can be expected to live for approximately 10 years. This houseplant performs well in both bright or indirect sunlight and strong artificial light, and can therefore be situated in almost any well-lit room or location. It does best in average to evenly moist soil, but will not tolerate standing water. The surface of the soil shouldn't be allowed to dry out completely, and so you should expect to water this plant once and possibly even twice each week. Be aware that your particular watering schedule may vary depending on its location in the room, the pot size, plant size and other conditions; if in doubt, ask one of our experts in the store for advice. It will benefit from a regular feeding with a general-purpose fertilizer with every second or third watering. It is not particular as to soil type or pH; an average potting soil should work just fine. Be warned that parts of this plant are known to be toxic to humans and animals, so special care should be exercised if growing it around children and pets.



*Golden Crocodile Philodendron  
foliage  
Photo courtesy of NetPS Plant  
Finder*

There are many factors that will affect the ultimate height, spread and overall performance of a plant when grown indoors; among them, the size of the pot it's growing in, the amount of light it receives, watering frequency, the pruning regimen and repotting schedule. Use the information described here as a guideline only; individual performance can and will vary. Please contact the store to speak with one of our experts if you are interested in further details concerning recommendations on pot size, watering, pruning, repotting, etc.

*-- THIS IS A HOUSEPLANT AND IS NOT MEANT TO SURVIVE THE WINTER OUTDOORS IN OUR CLIMATE --*

*-- THIS IS A TROPICAL PLANT AND SHOULD NOT BE EXPECTED TO SURVIVE THE WINTER OUTDOORS IN OUR CLIMATE --*