



Marmorata Aucuba
Aucuba japonica 'Marmorata'

Height: 6 feet

Spread: 6 feet

Sunlight: ● ●

Hardiness Zone: 6b

Description:

This stunning evergreen features foliage that is heavily splashed and spotted in bright yellow; flowers and berries appear only with male pollinator nearby; ideal as a dense screen; drought tolerant once established; protect from cold winter winds

Ornamental Features

Marmorata Aucuba has attractive yellow-spotted dark green foliage with hints of creamy white on a plant with a round habit of growth. The glossy pointy leaves are highly ornamental and remain dark green throughout the winter. It features subtle clusters of purple flowers at the ends of the branches in mid spring. It produces red berries from early to late fall.

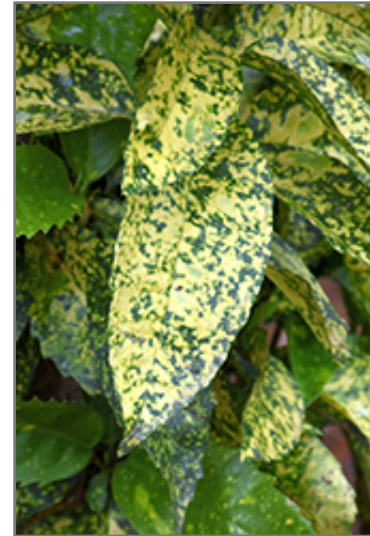
Landscape Attributes

Marmorata Aucuba is a dense multi-stemmed evergreen shrub with a more or less rounded form. Its average texture blends into the landscape, but can be balanced by one or two finer or coarser trees or shrubs for an effective composition.

This is a relatively low maintenance shrub, and can be pruned at anytime. It has no significant negative characteristics.

Marmorata Aucuba is recommended for the following landscape applications;

- Accent
- Mass Planting
- Hedges/Screening
- General Garden Use



Marmorata Aucuba foliage
Photo courtesy of NetPS Plant Finder



Marmorata Aucuba
Photo courtesy of NetPS Plant Finder

Planting & Growing

Marmorata Aucuba will grow to be about 6 feet tall at maturity, with a spread of 6 feet. It has a low canopy, and is suitable for planting under power lines. It grows at a fast rate, and under ideal conditions can be expected to live for approximately 20 years. This is a dioecious species, meaning that individual plants are either male or female. Only the females will produce fruit, and a male variety of the same species is required nearby as a pollinator.

This shrub does best in partial shade to shade. It does best in average to evenly moist conditions, but will not tolerate standing water. It is not particular as to soil pH, but grows best in rich soils. It is somewhat tolerant of urban pollution, and will benefit from being planted in a relatively sheltered location. Consider applying a thick mulch around the root zone in winter to protect it in exposed locations or colder microclimates. This is a selected variety of a species not originally from North America.