

Stonegate Gardens

339 South Great R

Lincoln, MA, 01773

phone: 781-259-8884

lynne@stonegategardens.com

www.stonegategardens.com

Electric Black Light New Zealand Flax



Electric Black Light New Zealand Flax

Phormium 'Electric Black Light'

Height: 24 inches

Spread: 3 feet

Spacing: 30 inches

Sunlight:

Hardiness Zone: (annual)

Description:

A very dark selection featuring near black leaves with burgundy-red edges and a fine, waxy coating; unique and eye catching as a contrasting accent in the garden or massed along borders; also a great center for a mixed container

Ornamental Features

Electric Black Light New Zealand Flax is primarily valued in the garden for its cascading habit of growth. Its attractive large sword-like leaves remain dark gray in color with distinctive burgundy edges and tinges of black throughout the year.

Landscape Attributes

Electric Black Light New Zealand Flax is an open herbaceous annual with a shapely form and gracefully arching foliage. Its relatively coarse texture can be used to stand it apart from other garden plants with finer foliage.

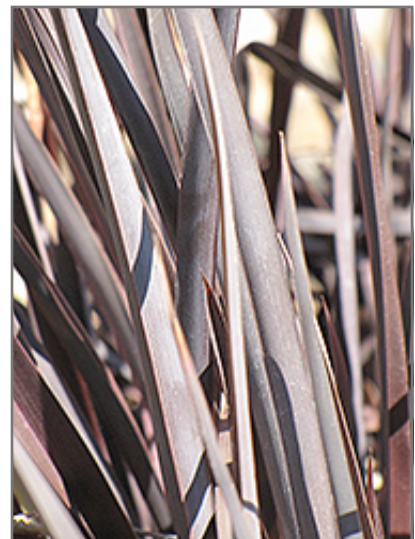
This is a relatively low maintenance plant, and is best cleaned up in early spring before it resumes active growth for the season. Deer don't particularly care for this plant and will usually leave it alone in favor of tastier treats. It has no significant negative characteristics.

Electric Black Light New Zealand Flax is recommended for the following landscape applications;

- Accent
- Mass Planting
- General Garden Use
- Container Planting



Electric Black Light New Zealand Flax
Photo courtesy of NetPS Plant Finder



Electric Black Light New Zealand Flax
foliage
Photo courtesy of NetPS Plant Finder

Stonegate Gardens

339 South Great R
Lincoln, MA, 01773
phone: 781-259-8884

lynne@stonegategardens.com
www.stonegategardens.com

Electric Black Light New Zealand Flax

Planting & Growing

Electric Black Light New Zealand Flax will grow to be about 24 inches tall at maturity, with a spread of 3 feet. When grown in masses or used as a bedding plant, individual plants should be spaced approximately 30 inches apart. Although it's not a true annual, this plant can be expected to behave as an annual in our climate if left outdoors over the winter, usually needing replacement the following year. As such, gardeners should take into consideration that it will perform differently than it would in its native habitat.

This plant does best in full sun to partial shade. It prefers to grow in average to moist conditions, and shouldn't be allowed to dry out. It is not particular as to soil type or pH. It is somewhat tolerant of urban pollution. This particular variety is an interspecific hybrid. It can be propagated by division; however, as a cultivated variety, be aware that it may be subject to certain restrictions or prohibitions on propagation.

Electric Black Light New Zealand Flax is a fine choice for the garden, but it is also a good selection for planting in outdoor pots and containers. It can be used either as 'filler' or as a 'thriller' in the 'spiller-thriller-filler' container combination, depending on the height and form of the other plants used in the container planting. It is even sizeable enough that it can be grown alone in a suitable container. Note that when growing plants in outdoor containers and baskets, they may require more frequent waterings than they would in the yard or garden.