

# Stonegate Gardens

339 South Great R  
Lincoln, MA, 01773  
phone: 781-259-8884

lynne@stonegategardens.com  
www.stonegategardens.com

## Ruby Chinese Fringeflower



### Ruby Chinese Fringeflower

*Loropetalum chinense 'Ruby'*

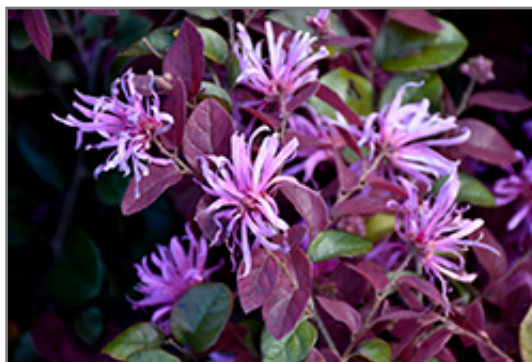
Height: 5 feet

Spread: 5 feet

Sunlight:

Hardiness Zone: 7a

Other Names: Chinese Fringe Flower, Chinese Witch Hazel



*Ruby Chinese Fringeflower flowers*  
Photo courtesy of NetPS Plant Finder

### Description:

A delightful spring-blooming shrub with stunning pink strap-like flowers literally smothering the plant; green summer foliage emerges ruby red, and darkens to deep burgundy in autumn; an easy to grow and well-behaved shrub for general garden use

### Ornamental Features

Ruby Chinese Fringeflower is draped in stunning fragrant pink strap-like flowers along the branches in early spring. It has attractive green evergreen foliage which emerges ruby-red in spring. The oval leaves are highly ornamental and turn burgundy in the fall, which persists throughout the winter.

### Landscape Attributes

Ruby Chinese Fringeflower is a multi-stemmed evergreen shrub with an upright spreading habit of growth. Its relatively fine texture sets it apart from other landscape plants with less refined foliage.

This is a relatively low maintenance shrub, and should only be pruned after flowering to avoid removing any of the current season's flowers. It has no significant negative characteristics.

Ruby Chinese Fringeflower is recommended for the following landscape applications;

- Accent
- Mass Planting
- Hedges/Screening
- General Garden Use

### Planting & Growing

Ruby Chinese Fringeflower will grow to be about 5 feet tall at maturity, with a spread of 5 feet. It has a low canopy, and is suitable for planting under power lines. It grows at a fast rate, and under ideal conditions can be expected to live for 40 years or more.

# Stonegate Gardens

## Ruby Chinese Fringeflower

339 South Great R  
Lincoln, MA, 01773  
phone: 781-259-8884  
lynne@stonegategardens.com  
www.stonegategardens.com

---

This shrub does best in full sun to partial shade. It prefers to grow in average to moist conditions, and shouldn't be allowed to dry out. It is particular about its soil conditions, with a strong preference for rich, acidic soils. It is somewhat tolerant of urban pollution. Consider applying a thick mulch around the root zone in winter to protect it in exposed locations or colder microclimates. This is a selected variety of a species not originally from North America.

This plant is not reliably hardy in our region, and certain restrictions may apply; contact the store for more information.