

# Wallitsch Nursery And Garden Center

2608 Hikes Lane  
Louisville, KY, 40218  
phone: 502-454-3553  
www.wallitsch.net

## Dwarf Hinoki Falsecypress



### Dwarf Hinoki Falsecypress

*Chamaecyparis obtusa 'Nana Gracilis'*

Height: 4 feet

Spread: 4 feet

Sunlight:

Hardiness Zone: 4b

#### Description:

A fantastic garden variety of the species with a rounded, compact habit, ideal for detail use; very delicate, almost ferny foliage

#### Ornamental Features

Dwarf Hinoki Falsecypress is a dwarf conifer which is primarily valued in the landscape or garden for its distinctively pyramidal habit of growth. It has dark green evergreen foliage. The scale-like sprays of foliage remain dark green throughout the winter.

#### Landscape Attributes

Dwarf Hinoki Falsecypress is a dense multi-stemmed evergreen shrub with a distinctive and refined pyramidal form. Its relatively fine texture sets it apart from other landscape plants with less refined foliage.

This is a relatively low maintenance shrub, and should not require much pruning, except when necessary, such as to remove dieback. It has no significant negative characteristics.

Dwarf Hinoki Falsecypress is recommended for the following landscape applications;

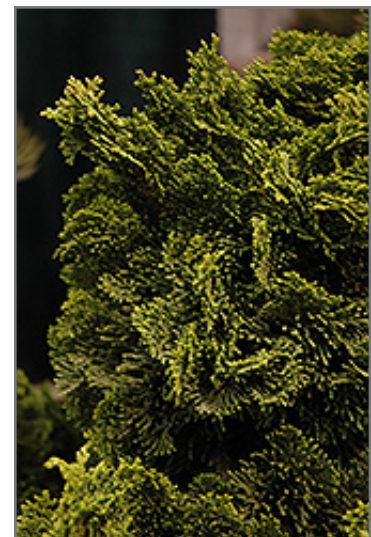
- Mass Planting
- Rock/Alpine Gardens
- General Garden Use
- Container Planting

#### Planting & Growing

Dwarf Hinoki Falsecypress will grow to be about 4 feet tall at maturity, with a spread of 4 feet. It tends to fill out right to the ground and therefore doesn't necessarily require facer plants in front. It grows at a medium rate, and under ideal conditions can be expected to live for 40 years or more.



*Dwarf Hinoki Falsecypress*  
Photo courtesy of NetPS Plant Finder



*Dwarf Hinoki Falsecypress foliage*  
Photo courtesy of NetPS Plant Finder

# Wallitsch Nursery And Garden Center

2608 Hikes Lane  
Louisville, KY, 40218  
phone: 502-454-3553  
[www.wallitsch.net](http://www.wallitsch.net)

## Dwarf Hinoki Falsecypress

---

This shrub does best in full sun to partial shade. It prefers to grow in average to moist conditions, and shouldn't be allowed to dry out. It is not particular as to soil type or pH. It is highly tolerant of urban pollution and will even thrive in inner city environments, and will benefit from being planted in a relatively sheltered location. Consider applying a thick mulch around the root zone in winter to protect it in exposed locations or colder microclimates. This is a selected variety of a species not originally from North America.

Dwarf Hinoki Falsecypress makes a fine choice for the outdoor landscape, but it is also well-suited for use in outdoor pots and containers. With its upright habit of growth, it is best suited for use as a 'thriller' in the 'spiller-thriller-filler' container combination; plant it near the center of the pot, surrounded by smaller plants and those that spill over the edges. It is even sizeable enough that it can be grown alone in a suitable container. Note that when grown in a container, it may not perform exactly as indicated on the tag - this is to be expected. Also note that when growing plants in outdoor containers and baskets, they may require more frequent waterings than they would in the yard or garden.