

# Lakeshore Garden Centres

## Dwarf Globe Japanese Cedar

4102 - 11th St. West  
P.O. Box 2A RR3  
Saskatoon, SK, S7K 3J6  
phone: 306-382-2077

info@lakeshoregardencentre.com  
www.lakeshoregardencentre.com



### Dwarf Globe Japanese Cedar *Cryptomeria japonica* 'Globosa Nana'

Height: 3 feet

Spread: 3 feet

Sunlight: ○ ●

Hardiness Zone: 5a

#### Description:

A rare compact garden detail plant; forms a dense mounded pyramid with blue green needles that turn light brown over the winter

#### Ornamental Features

Dwarf Globe Japanese Cedar is a dwarf conifer which is primarily valued in the garden for its ornamental globe-shaped form. It has attractive bluish-green evergreen foliage. The scale-like sprays of foliage are highly ornamental and turn antique red in the fall, which persists throughout the winter.

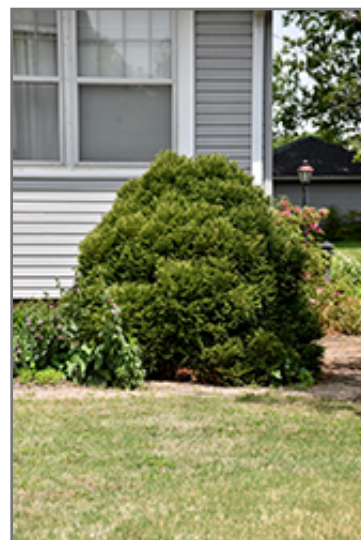
#### Landscape Attributes

Dwarf Globe Japanese Cedar is a multi-stemmed evergreen shrub with a more or less rounded form. It lends an extremely fine and delicate texture to the landscape composition which should be used to full effect.

This is a relatively low maintenance shrub, and should not require much pruning, except when necessary, such as to remove dieback. It has no significant negative characteristics.

Dwarf Globe Japanese Cedar is recommended for the following landscape applications;

- Mass Planting
- Hedges/Screening
- Rock/Alpine Gardens
- General Garden Use
- Container Planting



*Dwarf Globe Japanese Cedar*  
Photo courtesy of NetPS Plant Finder



*Dwarf Globe Japanese Cedar*  
Photo courtesy of NetPS Plant Finder

# Lakeshore Garden Centres

4102 - 11th St. West  
P.O. Box 2A RR3  
Saskatoon, SK, S7K 3J6  
phone: 306-382-2077

## Dwarf Globe Japanese Cedar

[info@lakeshoregardencentre.com](mailto:info@lakeshoregardencentre.com)  
[www.lakeshoregardencentre.com](http://www.lakeshoregardencentre.com)

---

### Planting & Growing

Dwarf Globe Japanese Cedar will grow to be about 3 feet tall at maturity, with a spread of 3 feet. It tends to fill out right to the ground and therefore doesn't necessarily require facer plants in front. It grows at a slow rate, and under ideal conditions can be expected to live for 40 years or more.

This shrub does best in full sun to partial shade. It prefers to grow in average to moist conditions, and shouldn't be allowed to dry out. It is particular about its soil conditions, with a strong preference for rich, acidic soils, and is able to handle environmental salt. It is quite intolerant of urban pollution, therefore inner city or urban streetside plantings are best avoided, and will benefit from being planted in a relatively sheltered location. Consider applying a thick mulch around the root zone in winter to protect it in exposed locations or colder microclimates. This is a selected variety of a species not originally from North America.

Dwarf Globe Japanese Cedar makes a fine choice for the outdoor landscape, but it is also well-suited for use in outdoor pots and containers. Because of its height, it is often used as a 'thriller' in the 'spiller-thriller-filler' container combination; plant it near the center of the pot, surrounded by smaller plants and those that spill over the edges. It is even sizeable enough that it can be grown alone in a suitable container. Note that when grown in a container, it may not perform exactly as indicated on the tag - this is to be expected. Also note that when growing plants in outdoor containers and baskets, they may require more frequent waterings than they would in the yard or garden. Be aware that in our climate, most plants cannot be expected to survive the winter if left in containers outdoors, and this plant is no exception. Contact our experts for more information on how to protect it over the winter months.

This plant is not reliably hardy in our region, and certain restrictions may apply; contact the store for more information.