

Lakeshore Garden Centres

4102 - 11th St. West
P.O. Box 2A RR3
Saskatoon, SK, S7K 3J6
phone: 306-382-2077

info@lakeshoregardencentre.com
www.lakeshoregardencentre.com

Dwarf Japanese Privet



Dwarf Japanese Privet

Ligustrum japonicum 'rotundifolium'

Height: 4 feet

Spread: 3 feet

Sunlight: ○ ●

Hardiness Zone: 7b

Other Names: Waxleaf Privet

Description:

This compact shrub is densely covered with waxy round leaves that curl somewhat; the shrub has a more open shape as it ages, it is quite beautiful and can be limbed up and used for bonsai; shows drought tolerance; delightful panicles of white flowers

Ornamental Features

Dwarf Japanese Privet features showy panicles of lightly-scented white flowers at the ends of the branches in mid spring. It has dark green evergreen foliage. The glossy round leaves remain dark green throughout the winter.

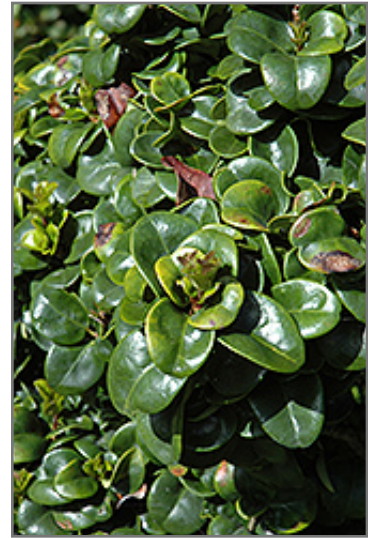
Landscape Attributes

Dwarf Japanese Privet is a multi-stemmed evergreen shrub with an upright spreading habit of growth. Its average texture blends into the landscape, but can be balanced by one or two finer or coarser trees or shrubs for an effective composition.

This is a relatively low maintenance shrub, and is best pruned in late winter once the threat of extreme cold has passed. It has no significant negative characteristics.

Dwarf Japanese Privet is recommended for the following landscape applications;

- Mass Planting
- Hedges/Screening
- General Garden Use
- Naturalizing And Woodland Gardens
- Topiary
- Container Planting



Dwarf Japanese Privet foliage
Photo courtesy of NetPS Plant Finder



Dwarf Japanese Privet
Photo courtesy of NetPS Plant Finder

Lakeshore Garden Centres

4102 - 11th St. West
P.O. Box 2A RR3
Saskatoon, SK, S7K 3J6
phone: 306-382-2077

Dwarf Japanese Privet

info@lakeshoregardencentre.com
www.lakeshoregardencentre.com

Planting & Growing

Dwarf Japanese Privet will grow to be about 4 feet tall at maturity, with a spread of 3 feet. It tends to fill out right to the ground and therefore doesn't necessarily require facer plants in front. It grows at a slow rate, and under ideal conditions can be expected to live for approximately 30 years.

This shrub does best in full sun to partial shade. It is very adaptable to both dry and moist growing conditions, but will not tolerate any standing water. It is considered to be drought-tolerant, and thus makes an ideal choice for xeriscaping or the moisture-conserving landscape. It is not particular as to soil type or pH, and is able to handle environmental salt. It is somewhat tolerant of urban pollution. This is a selected variety of a species not originally from North America.

Dwarf Japanese Privet makes a fine choice for the outdoor landscape, but it is also well-suited for use in outdoor pots and containers. With its upright habit of growth, it is best suited for use as a 'thriller' in the 'spiller-thriller-filler' container combination; plant it near the center of the pot, surrounded by smaller plants and those that spill over the edges. It is even sizeable enough that it can be grown alone in a suitable container. Note that when grown in a container, it may not perform exactly as indicated on the tag - this is to be expected. Also note that when growing plants in outdoor containers and baskets, they may require more frequent waterings than they would in the yard or garden. Be aware that in our climate, most plants cannot be expected to survive the winter if left in containers outdoors, and this plant is no exception. Contact our experts for more information on how to protect it over the winter months.

This plant is not reliably hardy in our region, and certain restrictions may apply; contact the store for more information.