

# Lakeshore Garden Centres

4102 - 11th St. West  
P.O. Box 2A RR3  
Saskatoon, SK, S7K 3J6  
phone: 306-382-2077

info@lakeshoregardencentre.com  
www.lakeshoregardencentre.com

## Sashay Coral Bells



### Sashay Coral Bells

*Heuchera 'Sashay'*

Plant Height: 8 inches

Flower Height: 15 inches

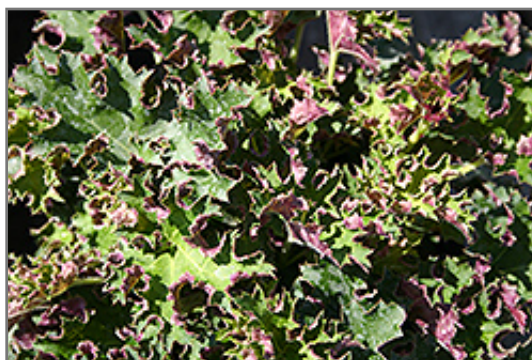
Spread: 22 inches

Spacing: 18 inches

Sunlight: ○ ● ●

Hardiness Zone: 4a

Other Names: Coralbells, Alumroot



*Sashay Coral Bells flowers*  
Photo courtesy of V. Trattar

### Description:

Interesting deeply ruffled leaves are green with purple underside; dainty spikes of pink bells rise from a compact mound; amazing contrast to other plants; great versatility; keep soil moist in heat of summer

### Ornamental Features

Sashay Coral Bells features dainty spikes of pink bell-shaped flowers rising above the foliage from late spring to early summer. Its attractive crinkled lobed leaves remain grayish green in colour with curious burgundy undersides throughout the year.

### Landscape Attributes

Sashay Coral Bells is a dense herbaceous evergreen perennial with tall flower stalks held atop a low mound of foliage. Its relatively fine texture sets it apart from other garden plants with less refined foliage.

This is a relatively low maintenance plant, and should be cut back in late fall in preparation for winter. It is a good choice for attracting hummingbirds to your yard. It has no significant negative characteristics.

Sashay Coral Bells is recommended for the following landscape applications;

- Mass Planting
- Rock/Alpine Gardens
- Border Edging
- General Garden Use
- Groundcover
- Container Planting

# Lakeshore Garden Centres

4102 - 11th St. West  
P.O. Box 2A RR3  
Saskatoon, SK, S7K 3J6  
phone: 306-382-2077

## Sashay Coral Bells

[info@lakeshoregardencentre.com](mailto:info@lakeshoregardencentre.com)  
[www.lakeshoregardencentre.com](http://www.lakeshoregardencentre.com)

---

### Planting & Growing

Sashay Coral Bells will grow to be about 8 inches tall at maturity extending to 15 inches tall with the flowers, with a spread of 22 inches. When grown in masses or used as a bedding plant, individual plants should be spaced approximately 18 inches apart. Its foliage tends to remain low and dense right to the ground. It grows at a medium rate, and under ideal conditions can be expected to live for approximately 10 years. As an evergreen perennial, this plant will typically keep its form and foliage year-round.

This plant performs well in both full sun and full shade. However, you may want to keep it away from hot, dry locations that receive direct afternoon sun or which get reflected sunlight, such as against the south side of a white wall. It prefers to grow in average to moist conditions, and shouldn't be allowed to dry out. It is not particular as to soil type or pH. It is somewhat tolerant of urban pollution. Consider covering it with a thick layer of mulch in winter to protect it in exposed locations or colder microclimates. This particular variety is an interspecific hybrid. It can be propagated by division; however, as a cultivated variety, be aware that it may be subject to certain restrictions or prohibitions on propagation.

Sashay Coral Bells is a fine choice for the garden, but it is also a good selection for planting in outdoor pots and containers. It is often used as a 'filler' in the 'spiller-thriller-filler' container combination, providing a mass of flowers and foliage against which the larger thriller plants stand out. Note that when growing plants in outdoor containers and baskets, they may require more frequent waterings than they would in the yard or garden. Be aware that in our climate, most plants cannot be expected to survive the winter if left in containers outdoors, and this plant is no exception. Contact our experts for more information on how to protect it over the winter months.

This plant is not reliably hardy in our region, and certain restrictions may apply; contact the store for more information.