

Lakeshore Garden Centres

4102 - 11th St. West
P.O. Box 2A RR3
Saskatoon, SK, S7K 3J6
phone: 306-382-2077

Ruby Chinese Fringeflower

info@lakeshoregardencentre.com
www.lakeshoregardencentre.com



Ruby Chinese Fringeflower

Loropetalum chinense 'Ruby'

Height: 5 feet

Spread: 5 feet

Sunlight:

Hardiness Zone: 8a

Other Names: Chinese Fringe Flower, Chinese Witch Hazel

Description:

A delightful spring-blooming shrub with stunning pink strap-like flowers literally smothering the plant; green summer foliage emerges ruby red, and darkens to deep burgundy in autumn; an easy to grow and well-behaved shrub for general garden use

Ornamental Features

Ruby Chinese Fringeflower is draped in stunning fragrant pink strap-like flowers along the branches in early spring. Its attractive oval leaves emerge ruby-red in spring, turning green in colour. The foliage often turns burgundy in fall.

Landscape Attributes

Ruby Chinese Fringeflower is a multi-stemmed evergreen perennial with an upright spreading habit of growth. Its relatively fine texture sets it apart from other garden plants with less refined foliage.

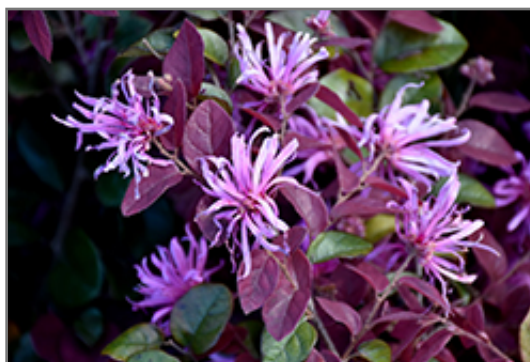
This is a relatively low maintenance plant, and should only be pruned after flowering to avoid removing any of the current season's flowers. It has no significant negative characteristics.

Ruby Chinese Fringeflower is recommended for the following landscape applications;

- Accent
- Mass Planting
- Hedges/Screening
- General Garden Use

Planting & Growing

Ruby Chinese Fringeflower will grow to be about 5 feet tall at maturity, with a spread of 5 feet. Although it is technically a woody plant, this fast-growing plant can be expected to behave as a perennial in our climate if planted outdoors over the winter, usually regrowing from its base (crown) the following year. As such, gardeners should take into consideration that it will perform differently than it would in its native habitat.



Ruby Chinese Fringeflower flowers
Photo courtesy of NetPS Plant Finder

Lakeshore Garden Centres

Ruby Chinese Fringeflower

4102 - 11th St. West
P.O. Box 2A RR3
Saskatoon, SK, S7K 3J6
phone: 306-382-2077

info@lakeshoregardencentre.com
www.lakeshoregardencentre.com

This plant does best in full sun to partial shade. It prefers to grow in average to moist conditions, and shouldn't be allowed to dry out. It is particular about its soil conditions, with a strong preference for rich, acidic soils. It is somewhat tolerant of urban pollution. Consider applying a thick mulch around the root zone in winter to protect it in exposed locations or colder microclimates. This is a selected variety of a species not originally from North America.

This plant is not reliably hardy in our region, and certain restrictions may apply; contact the store for more information.