

Lakeshore Garden Centres

Centerpiece Chrysanthemum

4102 - 11th St. West
P.O. Box 2A RR3
Saskatoon, SK, S7K 3J6
phone: 306-382-2077

info@lakeshoregardencentre.com
www.lakeshoregardencentre.com



Centerpiece Chrysanthemum

Chrysanthemum 'Centerpiece'

Height: 24 inches

Spread: 24 inches

Sunlight: ☉ ●

Hardiness Zone: 3b

Other Names: Garden Mum, Korean Mum, Dendranthemum

Description:

Beautiful light pink blooms with yellow eyes blanket green, fern-like foliage on upright-mounded plants; great for planting in borders, beds and containers; stunning added to fresh-cut arrangements; blooms all autumn long

Ornamental Features

Centerpiece Chrysanthemum is smothered in stunning lavender daisy flowers with fuchsia overtones and yellow eyes at the ends of the stems from early to late fall. The flowers are excellent for cutting. Its fragrant ferny leaves remain green in colour throughout the season.

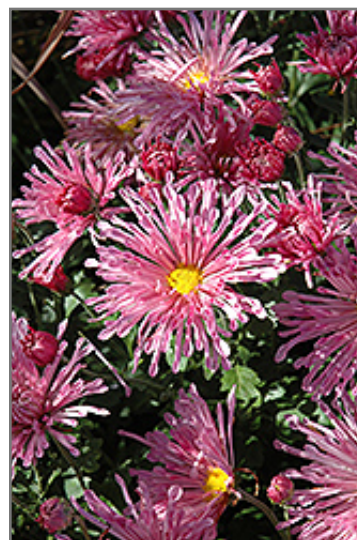
Landscape Attributes

Centerpiece Chrysanthemum is an herbaceous perennial with an upright spreading habit of growth. Its relatively fine texture sets it apart from other garden plants with less refined foliage.

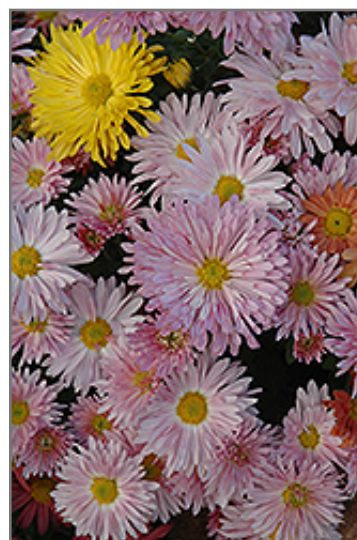
This is a relatively low maintenance plant, and is best cleaned up in early spring before it resumes active growth for the season. Deer don't particularly care for this plant and will usually leave it alone in favor of tastier treats. It has no significant negative characteristics.

Centerpiece Chrysanthemum is recommended for the following landscape applications;

- Mass Planting
- Border Edging
- General Garden Use
- Container Planting



Centerpiece Chrysanthemum flowers
Photo courtesy of NetPS Plant Finder



Centerpiece Chrysanthemum flowers
Photo courtesy of NetPS Plant Finder

Lakeshore Garden Centres

4102 - 11th St. West
P.O. Box 2A RR3
Saskatoon, SK, S7K 3J6
phone: 306-382-2077

Centerpiece Chrysanthemum

info@lakeshoregardencentre.com
www.lakeshoregardencentre.com

Planting & Growing

Centerpiece Chrysanthemum will grow to be about 24 inches tall at maturity, with a spread of 24 inches. It grows at a medium rate, and under ideal conditions can be expected to live for approximately 10 years. As an herbaceous perennial, this plant will usually die back to the crown each winter, and will regrow from the base each spring. Be careful not to disturb the crown in late winter when it may not be readily seen!

This plant does best in full sun to partial shade. It does best in average to evenly moist conditions, but will not tolerate standing water. It is not particular as to soil type or pH. It is highly tolerant of urban pollution and will even thrive in inner city environments. This particular variety is an interspecific hybrid. It can be propagated by division; however, as a cultivated variety, be aware that it may be subject to certain restrictions or prohibitions on propagation.

Centerpiece Chrysanthemum is a fine choice for the garden, but it is also a good selection for planting in outdoor pots and containers. With its upright habit of growth, it is best suited for use as a 'thriller' in the 'spiller-thriller-filler' container combination; plant it near the center of the pot, surrounded by smaller plants and those that spill over the edges. It is even sizeable enough that it can be grown alone in a suitable container. Note that when growing plants in outdoor containers and baskets, they may require more frequent waterings than they would in the yard or garden. Be aware that in our climate, most plants cannot be expected to survive the winter if left in containers outdoors, and this plant is no exception. Contact our experts for more information on how to protect it over the winter months.

This plant is not reliably hardy in our region, and certain restrictions may apply; contact the store for more information.