

Lakeshore Garden Centres

Strike Plum New Guinea Impatiens

4102 - 11th St. West
P.O. Box 2A RR3
Saskatoon, SK, S7K 3J6
phone: 306-382-2077

info@lakeshoregardencentre.com
www.lakeshoregardencentre.com



Strike™ Plum New Guinea Impatiens

Impatiens hawkeri 'Strike Plum'

Height: 16 inches

Spread: 14 inches

Spacing: 8 inches

Sunlight: ● ●

Hardiness Zone: (annual)

Other Names: New Guinea Impatiens, Busy Lizzie, Busy Lizzy

Group/Class: Strike Series

Description:

Striking like the name suggests, this variety features eye-catching variegated foliage, topped with large, colorful blooms; early to flower and shade tolerant, great for garden beds, borders, hanging baskets or containers; low maintenance and easy to grow

Ornamental Features

Strike Plum New Guinea Impatiens features bold crimson round flowers at the ends of the stems from mid spring to early fall. Its pointy leaves remain dark green in colour with showy yellow variegation throughout the season.

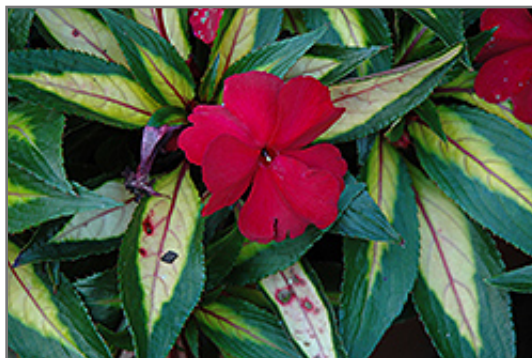
Landscape Attributes

Strike Plum New Guinea Impatiens is a dense herbaceous annual with a mounded form. Its medium texture blends into the garden, but can always be balanced by a couple of finer or coarser plants for an effective composition.

This plant will require occasional maintenance and upkeep, and should not require much pruning, except when necessary, such as to remove dieback. It is a good choice for attracting bees and butterflies to your yard. It has no significant negative characteristics.

Strike Plum New Guinea Impatiens is recommended for the following landscape applications;

- Mass Planting
- Border Edging
- General Garden Use
- Container Planting
- Hanging Baskets



Strike Plum New Guinea Impatiens flowers
Photo courtesy of NetPS Plant Finder

Lakeshore Garden Centres

4102 - 11th St. West
P.O. Box 2A RR3
Saskatoon, SK, S7K 3J6
phone: 306-382-2077

Strike Plum New Guinea Impatiens

info@lakeshoregardencentre.com
www.lakeshoregardencentre.com

Planting & Growing

Strike Plum New Guinea Impatiens will grow to be about 14 inches tall at maturity, with a spread of 14 inches. When grown in masses or used as a bedding plant, individual plants should be spaced approximately 8 inches apart. Its foliage tends to remain dense right to the ground, not requiring facer plants in front. This fast-growing annual will normally live for one full growing season, needing replacement the following year.

This plant does best in partial shade to shade. It does best in average to evenly moist conditions, but will not tolerate standing water. This plant should not require much in the way of fertilizing once established, although it may appreciate a shot of general-purpose fertilizer from time to time early in the growing season. It is not particular as to soil type or pH. It is highly tolerant of urban pollution and will even thrive in inner city environments. This is a selected variety of a species not originally from North America. It can be propagated by cuttings; however, as a cultivated variety, be aware that it may be subject to certain restrictions or prohibitions on propagation.

Strike Plum New Guinea Impatiens is a fine choice for the garden, but it is also a good selection for planting in outdoor containers and hanging baskets. It is often used as a 'filler' in the 'spiller-thriller-filler' container combination, providing a mass of flowers against which the thriller plants stand out. Note that when growing plants in outdoor containers and baskets, they may require more frequent waterings than they would in the yard or garden.